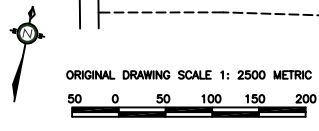


NOTES:

1. THIS SCHEDULE "A" FORMS PART OF THE OFFICIAL PLAN OF THE VILLAGE OF FENELON FALLS AND MUST BE READ IN CONJUNCTION WITH THE WRITTEN TEXT.
2. THIS SCHEDULE "A" FORMS PART OF THE OFFICE CONSOLIDATION OF THE OFFICIAL PLAN FOR THE VILLAGE OF FENELON FALLS DATED AUGUST 1, 2000. REFERENCE SHOULD BE MADE TO THE ORIGINAL COPY OF THE OFFICIAL PLAN AND THE AMENDMENTS THERETO AS APPROVED BY THE MINISTRY OF MUNICIPAL AFFAIRS AND HOUSING OR THE COUNTY OF VICTORIA.

Consolidated JULY, 2012

SCHEDULE "A" LAND USE PLAN CORPORATION OF THE VILLAGE OF FENELON FALLS



McDERMOTT & ASSOCIATES LIMITED
URBAN & REGIONAL PLANNING CONSULTANTS
REVISION DATE: BASE MAP 11/09/00