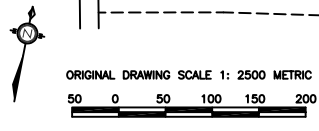




LEGEND

 ENVIRONMENTALLY SENSITIVE AREA

- NOTES:**
1. THIS SCHEDULE "C" FORMS PART OF THE OFFICIAL PLAN OF THE VILLAGE OF FENELON FALLS AND MUST BE READ IN CONJUNCTION WITH THE WRITTEN TEXT.
 2. THIS SCHEDULE "C" FORMS PART OF THE OFFICE CONSOLIDATION OF THE OFFICIAL PLAN FOR THE VILLAGE OF FENELON FALLS DATED AUGUST 1, 2000. REFERENCE SHOULD BE MADE TO THE ORIGINAL COPY OF THE OFFICIAL PLAN AND THE AMENDMENTS THERETO AS APPROVED BY THE MINISTRY OF MUNICIPAL AFFAIRS AND HOUSING OR THE COUNTY OF VICTORIA.



ORIGINAL DRAWING SCALE 1: 2500 METRIC

McDERMOTT & ASSOCIATES LIMITED
 URBAN & REGIONAL PLANNING CONSULTANTS

REVISION DATE: BASE MAP 11/09/00

SCHEDULE "C"
ENVIRONMENTALLY
SENSITIVE AREA
CORPORATION OF THE
VILLAGE OF FENELON FALLS