

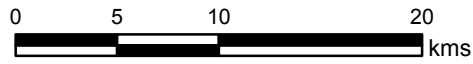


City of Kawartha Lakes Official Plan

Schedule H

Mineral Aggregate Resource Areas and Operations

Scale 1 cm = 3.7 km



Legend

Mineral Aggregate Resource Areas (Sand and Gravel)

- Sand and Gravel, Primary Significance
- Sand and Gravel, Secondary Significance
- Sand and Gravel, Tertiary Significance

Mineral Aggregate Resource Areas (Bedrock)

- Paleozoic bedrock outcrop. Areas of exposed bedrock partially covered by a thin veneer of drift. Drift thickness is generally less than 1m (3 feet).
- Paleozoic bedrock covered by drift. Drift thickness is generally 1 to 8 m (3 to 25 feet). Bedrock outcrops may occur.
- Paleozoic bedrock covered by drift. Drift thickness is generally 8 to 15 m (25 to 50 feet). Isolated bedrock outcrops may occur.
- Paleozoic bedrock covered by drift. Drift thickness is generally greater than 15 m (50 feet).

Mineral Aggregate Operations (Licenced Tonnes):

- N Unknown Tonnage
- 1 Up to 20,000
- 2 20,001 to 100,000
- 3 100,001 to 200,000
- 4 200,001 to 300,000
- 5 300,001 to 500,000
- 6 500,001 to 1,000,000
- 7 1,000,001 to 4,000,000

Other Map Features

- Oak Ridges Moraine Conservation Plan Area

Road Types and Rail

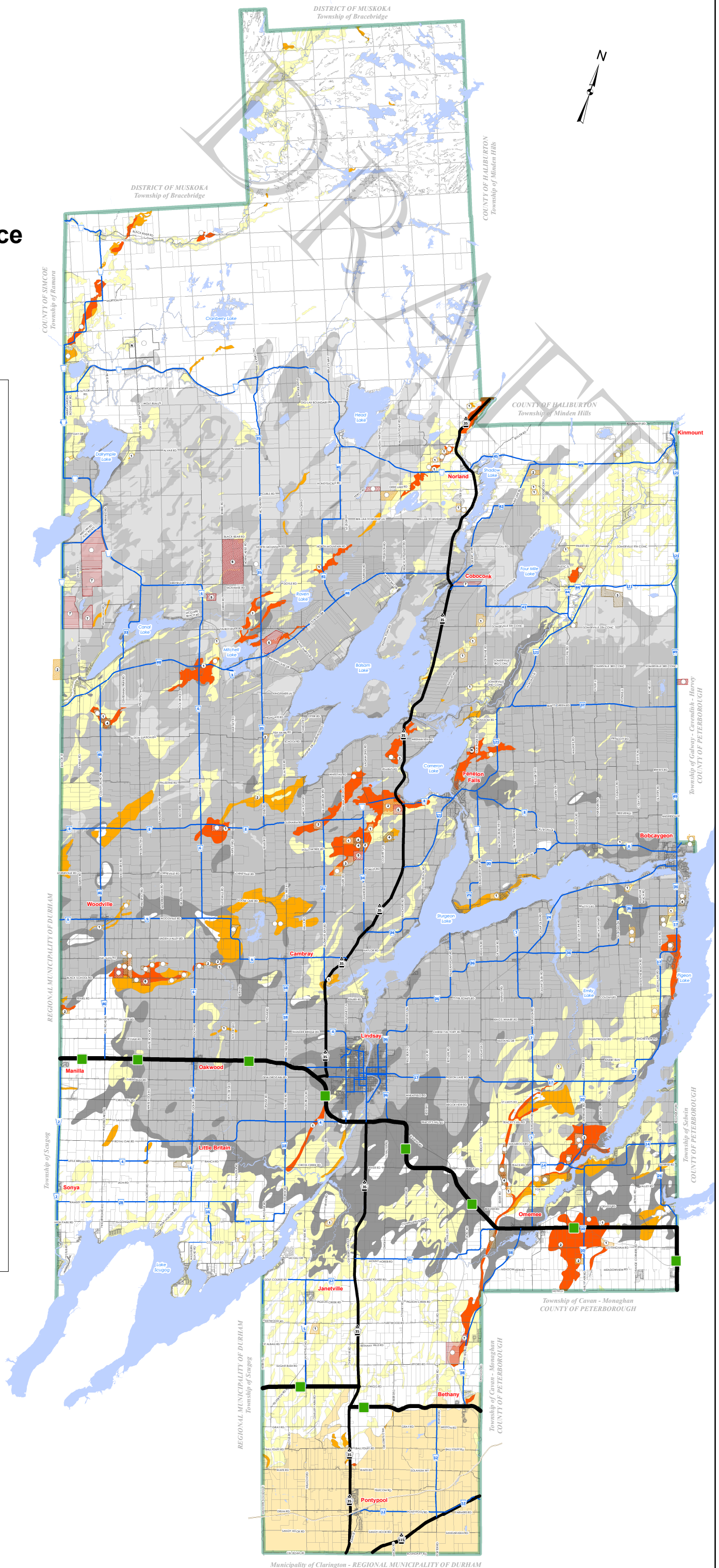
- Highways (Provincial)
- Arterial Roads (Provincial)
- Arterial Roads (Municipal)
- Local Roads (Municipal)
- CP Rail

Information Sources:

Ministry of Northern Development and Mines,
Ministry of Natural Resources and Forestry

Note:

Boundaries of Mineral Aggregate Areas and Other Map Features are subject to change based on information from MNDM, MNRF, CA and City of Kawartha Lakes



May 2019
Revision:0

Uncontrolled document when printed.

Universal Transverse Mercator (UTM) Projection
Projection transverse de Mercator

North American Datum 1983
Système de référence nord-américain de 1983

Map produced by the City of Kawartha Lakes Engineering Department with data obtained under license. Reproduction without permission is prohibited.

The foregoing information is given for convenience only and it should be clearly understood that you must satisfy yourself as to whether the premises and the existing or proposed use thereof are, or would be, in conformity with all applicable by-laws and regulations of the municipality.

All distances and locations are approximate and are not of survey quality. This map is illustrative only. Do not rely on it as being a precise indicator of privately or publicly owned land, routes, locations or features, nor as a guide to navigate.