

METRIC: DISTANCES AND COORDINATES SHOWN HEREON ARE IN METRES AND CAN BE CONVERTED TO FEET BY DIVIDING BY 0.3048

SCHEDULE

PART	BLOCK	PLAN	PIN	AREA
1	PART OF BLOCK B	REGISTERED PLAN No. 531	ALL OF 63113-0284(LT)	0.36 ha

PART 1 COMPRISES ALL OF PIN 63113-0284(LT)

I REQUIRE THIS PLAN TO BE DEPOSITED UNDER THE LAND TITLES ACT.

DATE MARCH 29, 2017

CHRISTOPHER E. MUSCLOW  
ONTARIO LAND SURVEYOR

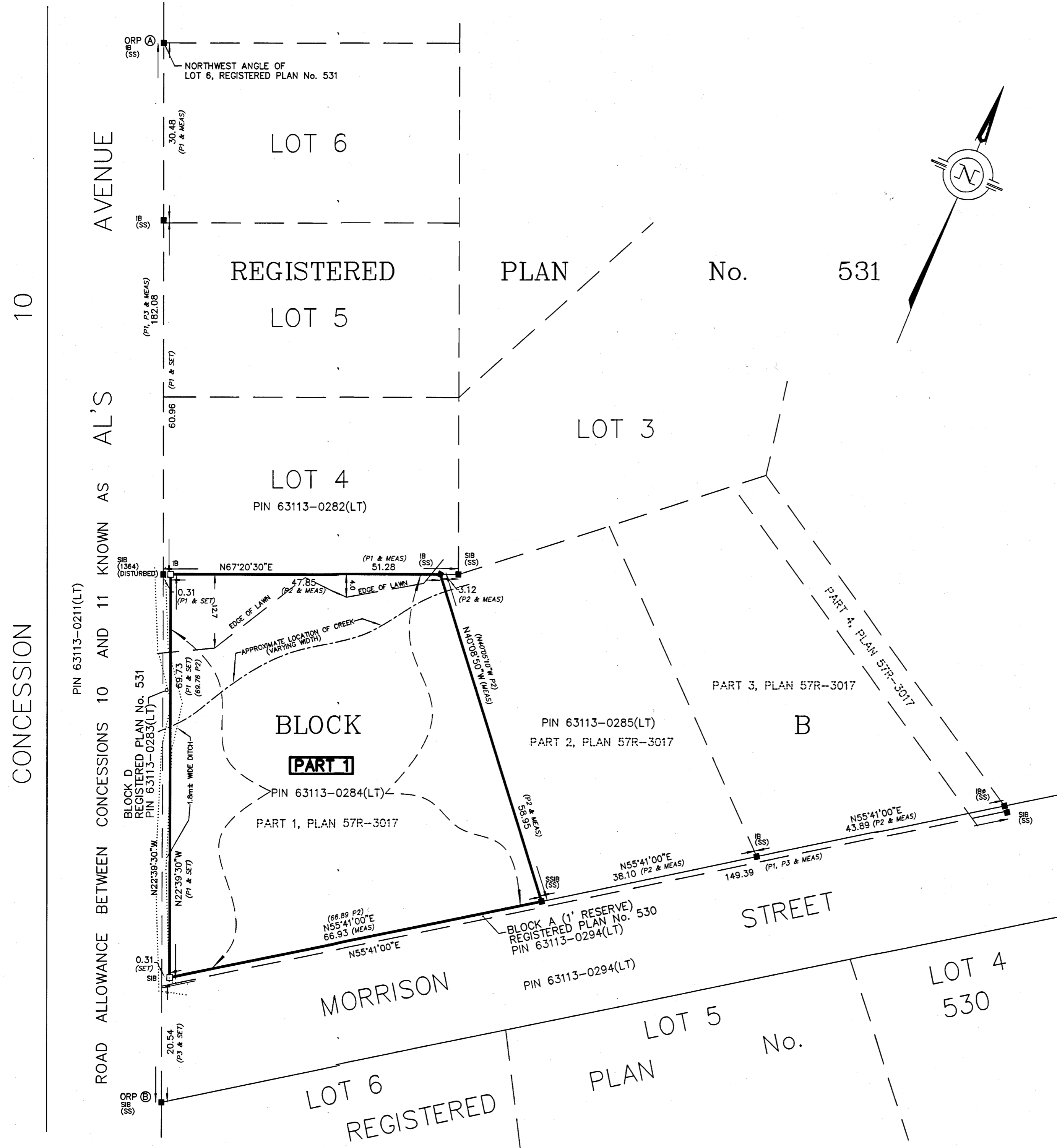
PLAN 57R-10587

RECEIVED AND DEPOSITED

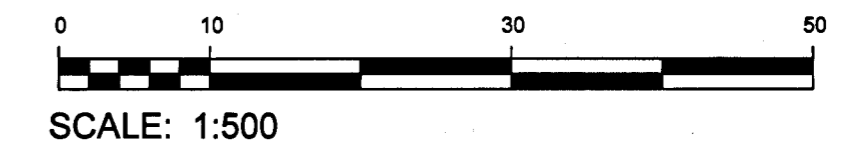
DATE April 28, 2017

"B. Bartley"

REPRESENTATIVE FOR THE LAND REGISTRAR FOR THE LAND TITLES DIVISION OF VICTORIA (No. 57)



PLAN OF SURVEY OF  
PART OF BLOCK B  
REGISTERED PLAN No. 531  
GEOGRAPHIC TOWNSHIP OF LAXTON  
CITY OF KAWARTHA LAKES



SURVEYOR'S CERTIFICATE

I CERTIFY THAT:

- THIS SURVEY AND PLAN ARE CORRECT AND ARE IN ACCORDANCE WITH THE SURVEYS ACT, THE SURVEYORS ACT AND THE LAND TITLES ACT AND THE REGULATIONS MADE UNDER THEM.
- THE SURVEY WAS COMPLETED ON MARCH 3, 2017.

SIGNED AT LAKEFIELD, ONTARIO  
THIS 29th DAY OF MARCH, 2017

CHRISTOPHER E. MUSCLOW  
ONTARIO LAND SURVEYOR

LEGEND

- DENOTES SURVEY MONUMENT FOUND
- DENOTES SURVEY MONUMENT PLANTED
- WIT. DENOTES WITNESS
- 1364 DENOTES M.R. ELMS, O.L.S.
- SS DENOTES SMITH & SMITH, O.L.S.
- P1 DENOTES REGISTERED PLAN No. 531
- P2 DENOTES DEPOSITED PLAN 57R-3017
- P3 DENOTES REGISTERED PLAN No. 530

BEARINGS SHOWN HEREON ARE UTM GRID, DERIVED FROM PRECISE POINT POSITIONING SERVICE ON POINTS A AND B LISTED HEREON AND ARE REFERRED TO THE CENTRAL MERIDIAN OF UTM ZONE 17 (81° WEST LONGITUDE) NAD 83 (CSRS EPOCH 1997.0).

FOR BEARING COMPARISONS, A ROTATION OF 1°29'30" COUNTER CLOCKWISE WAS APPLIED TO BEARINGS SHOWN ON PLANS P1, P2 AND P3.

DISTANCES SHOWN HEREON ARE GROUND DISTANCES AND CAN BE USED TO COMPUTE GRID DISTANCES BY MULTIPLYING BY A COMBINED SCALE FACTOR OF 0.99993024

INTEGRATION DATA

COORDINATES ARE DERIVED FROM STATIC GPS OBSERVATIONS USING THE PRECISE POINT POSITIONING SERVICE (PPP) AND ARE REFERRED TO UTM ZONE 17 (81°W LONGITUDE) NAD83 (CSRS EPOCH 1997.0).

OBSERVED REFERENCE POINT (ORP) COORDINATE VALUES ARE TO 'RURAL' ACCURACY SPECIFICATION IN ACCORDANCE WITH SEC. 14(2) OF O.REG. 216/10

POINT	UTM NORTHING	UTM EASTING
ORP (A)	4954999.15	672651.19
ORP (B)	4954831.15	672721.34

CAUTION: COORDINATES CANNOT, IN THEMSELVES, BE USED TO RE-ESTABLISH CORNERS OR BOUNDARIES SHOWN ON THIS PLAN.

**JBF SURVEYORS**  
J. B. FLEGUEL SURVEYORS  
44 CLEMENTI ST., BOX 70  
LAKEFIELD, ON K0L 2H0  
PHONE: 705-652-6198  
FAX: 705-652-1647  
JBFLEGUEL@KAWARTHASURVEYOR.COM  
PROJ. # 5509