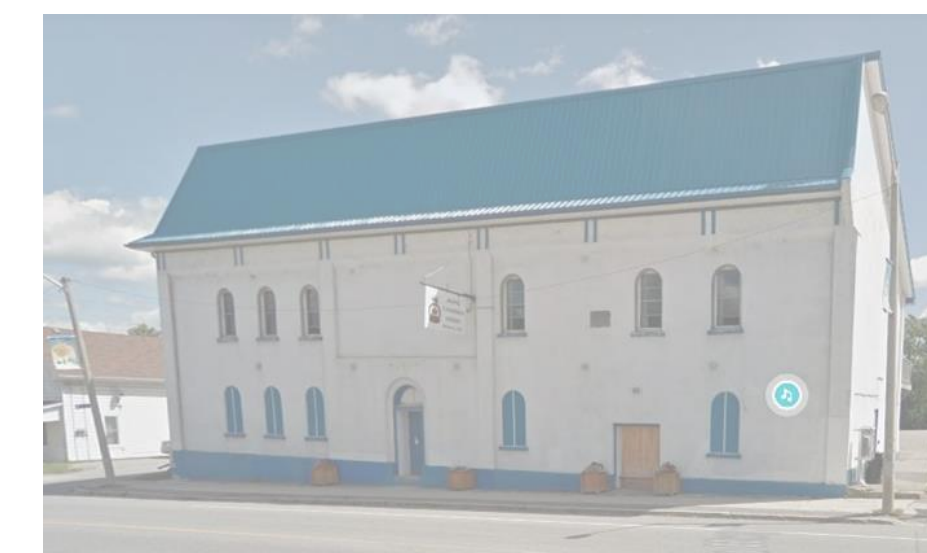


PUBLIC INFORMATION CENTRE

KING STREET RECONSTRUCTION JAMES STREET NORTH TO PIGEON RIVER

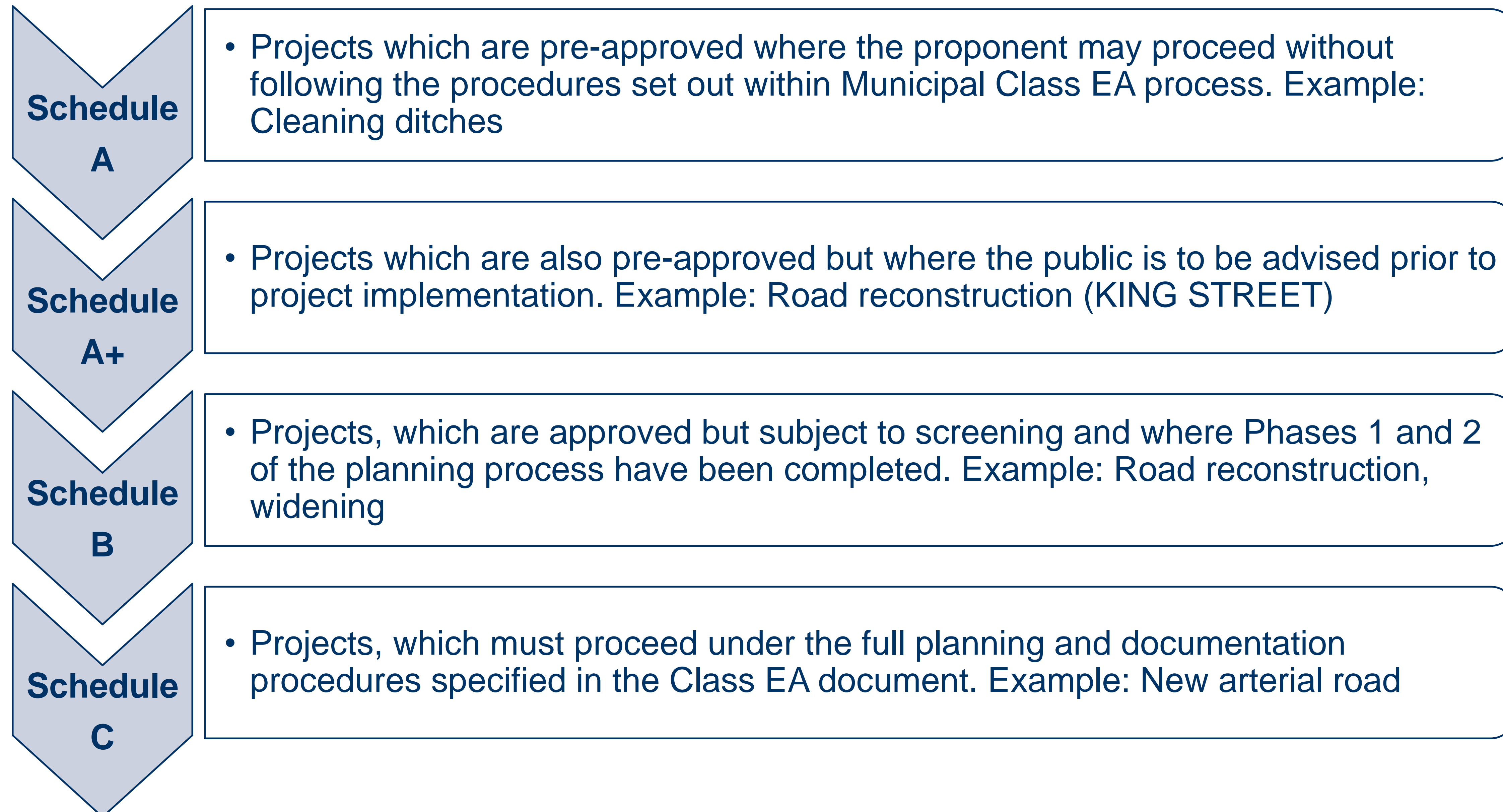


Municipal Class Environmental Assessment Wednesday September 23rd, 2020



MUNICIPAL CLASS EA PROCESS

Four types of projects to which the Class EA applies are:



The King Street Municipal Class Environmental Assessment is being planned as a **Schedule 'A+'** project based on the nature of work; as a Schedule 'A+', it is pre-approved.

KING STREET PROJECT LIMITS

The limits for this project extend between James Street North and the Pigeon River



PREVIOUS STUDY:

In 2012 the City of Kawartha Lakes completed the City of Kawartha Lakes Growth Management Strategy and Municipal Master Plan Project.

As part of the study, areas of improvements were identified within these project limits to address traffic queuing at the intersection of King Street and Sturgeon Road North and South.

SCOPE OF WORK

The King Street project will include full Road Reconstruction and Streetscape Improvements.

Road Reconstruction

Between the limits of James Street North to the Pigeon River:

- Concrete curb & gutter
- Underground infrastructure replacement (storm sewer)
- Dedicated left-turn lane
 - Sturgeon Rd N

Design will improve underground infrastructure, vehicular traffic flow, and queuing at intersection.

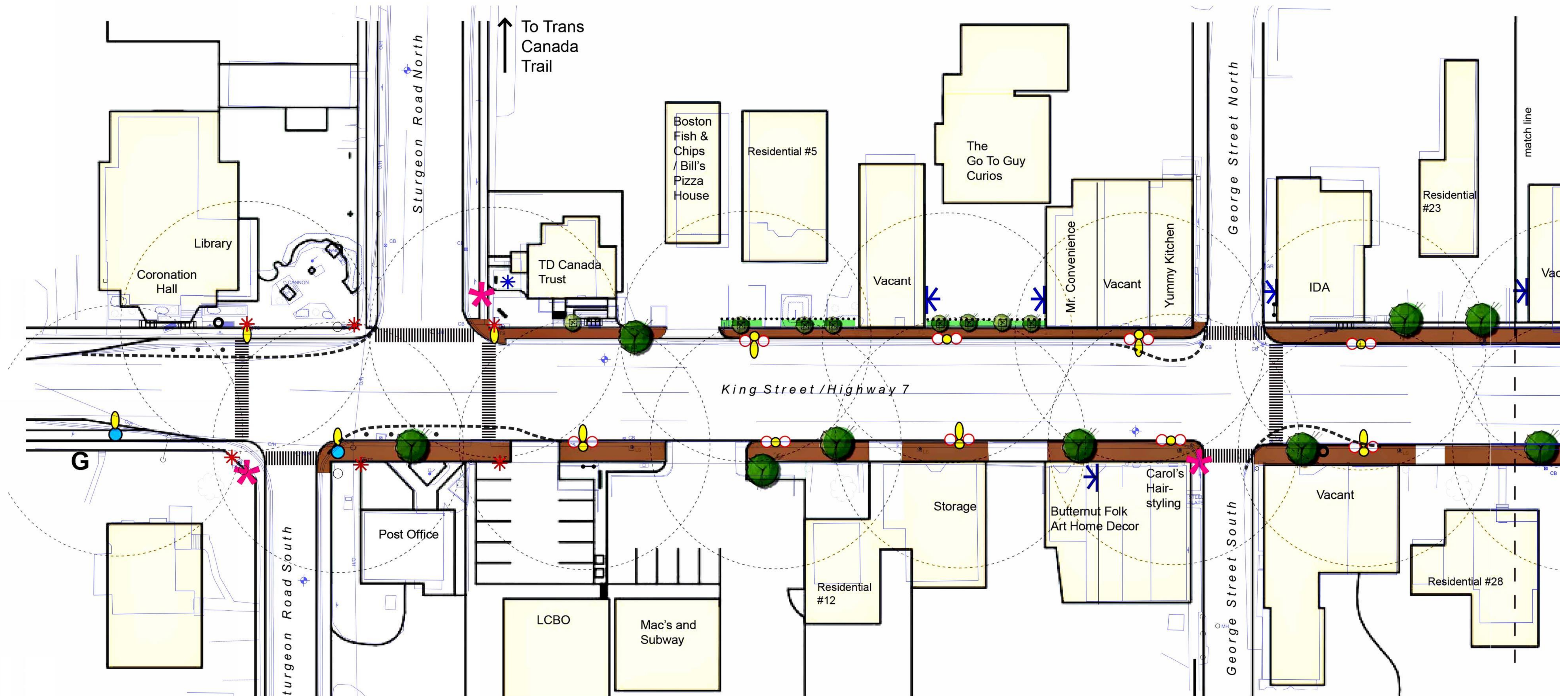
Streetscape Improvements

Between the limits of James Street North to Pigeon River:










- Furnishing Zone
- Pedestrian Zone

Design will improve pedestrian traffic flow and safety.

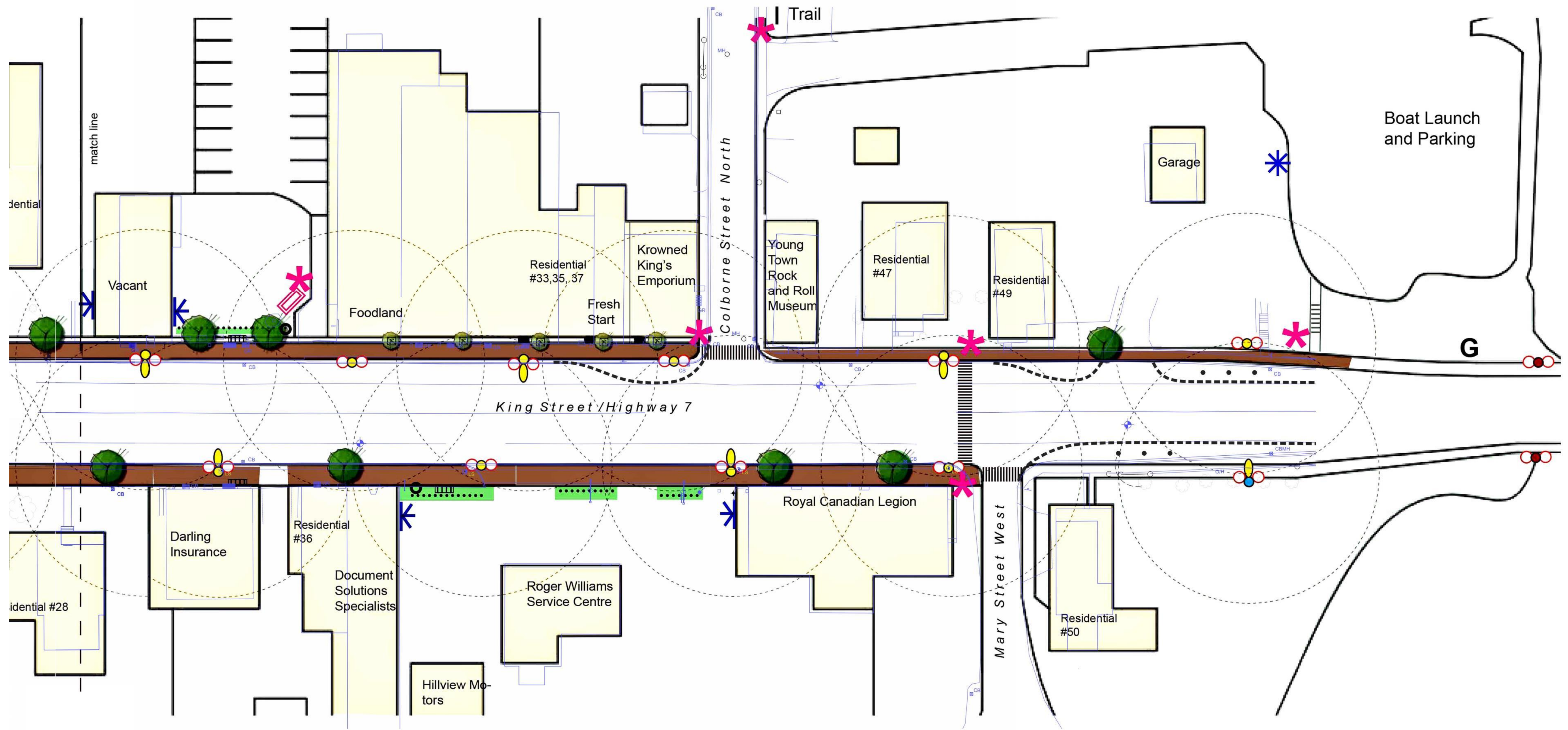
STREETSCAPE PLAN












Legend

-  Proposed Decorative Street Lights (streetside and pedestrian) with Hanging Baskets & Banners
-  Proposed Decorative Street Light (pedestrian) with Hanging Baskets & Banners
-  Proposed Deciduous Tree
-  Pedestrian Paving
-  Possible Landscape Greening & Fence
-  Future Wayfinding Features (Not in Contract)
-  Proposed Seasonal Planter
-  Possible Curb Extensions for increased Pedestrian space and Landscape Features
-  Proposed Heritage Banner Poles & Lights as Gateway Features to the Downtown

STREETSCAPE PLAN



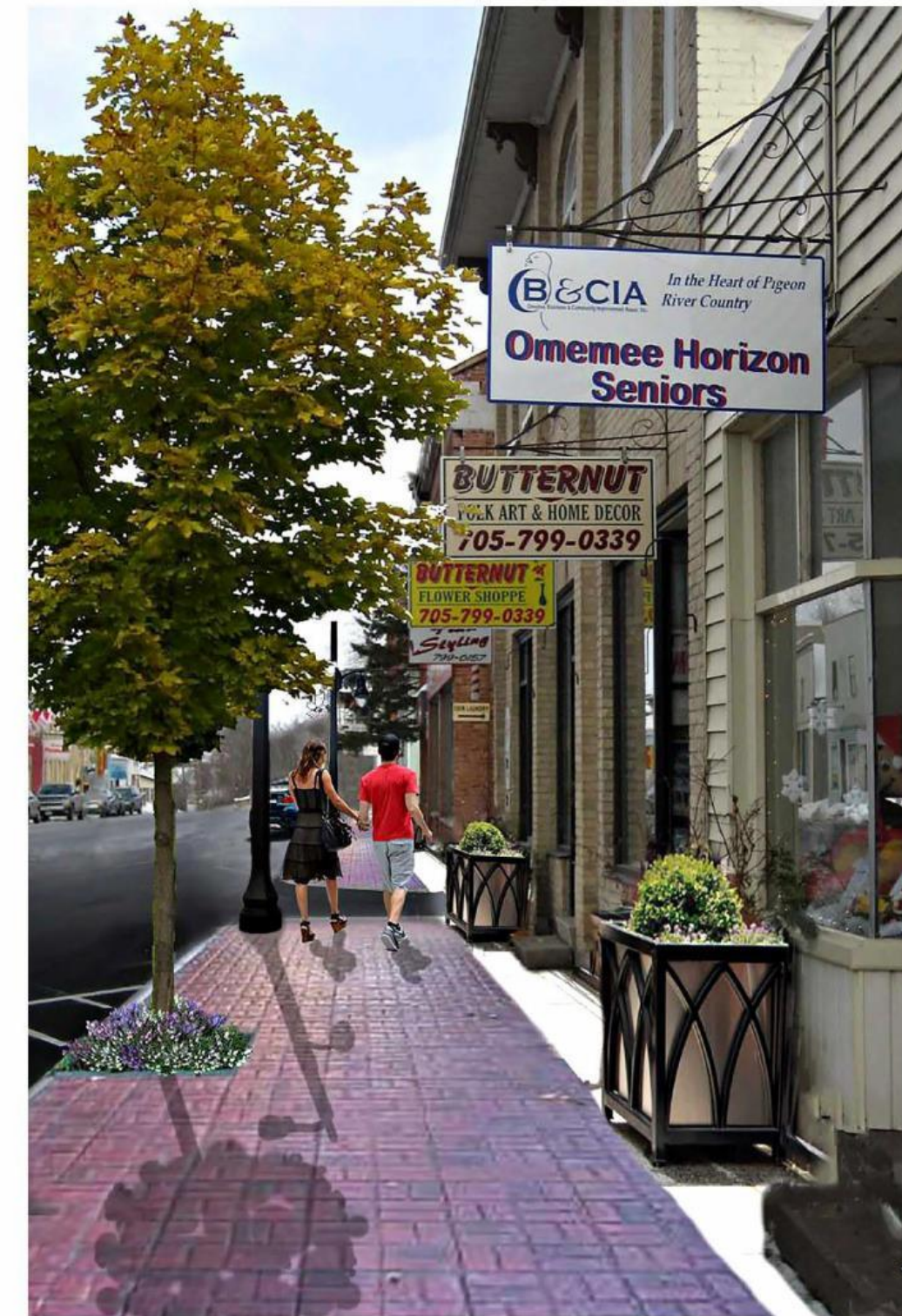
Legend

-  Proposed Decorative Street Lights (streetside and pedestrian) with Hanging Baskets & Banners
-  Proposed Decorative Street Light (pedestrian) with Hanging Baskets & Banners
-  Proposed Deciduous Tree
-  Pedestrian Paving
-  Possible Landscape Greening & Fence
-  Future Wayfinding Features (Not in Contract)
-  Proposed Seasonal Planter
-  Possible Curb Extensions for increased Pedestrian space and Landscape Features
-  Proposed Heritage Banner Poles & Lights as Gateway Features to the Downtown

STREETSCAPE IMPROVEMENTS



Existing King St. Streetscape View



Proposed Typical King St. Streetscape View



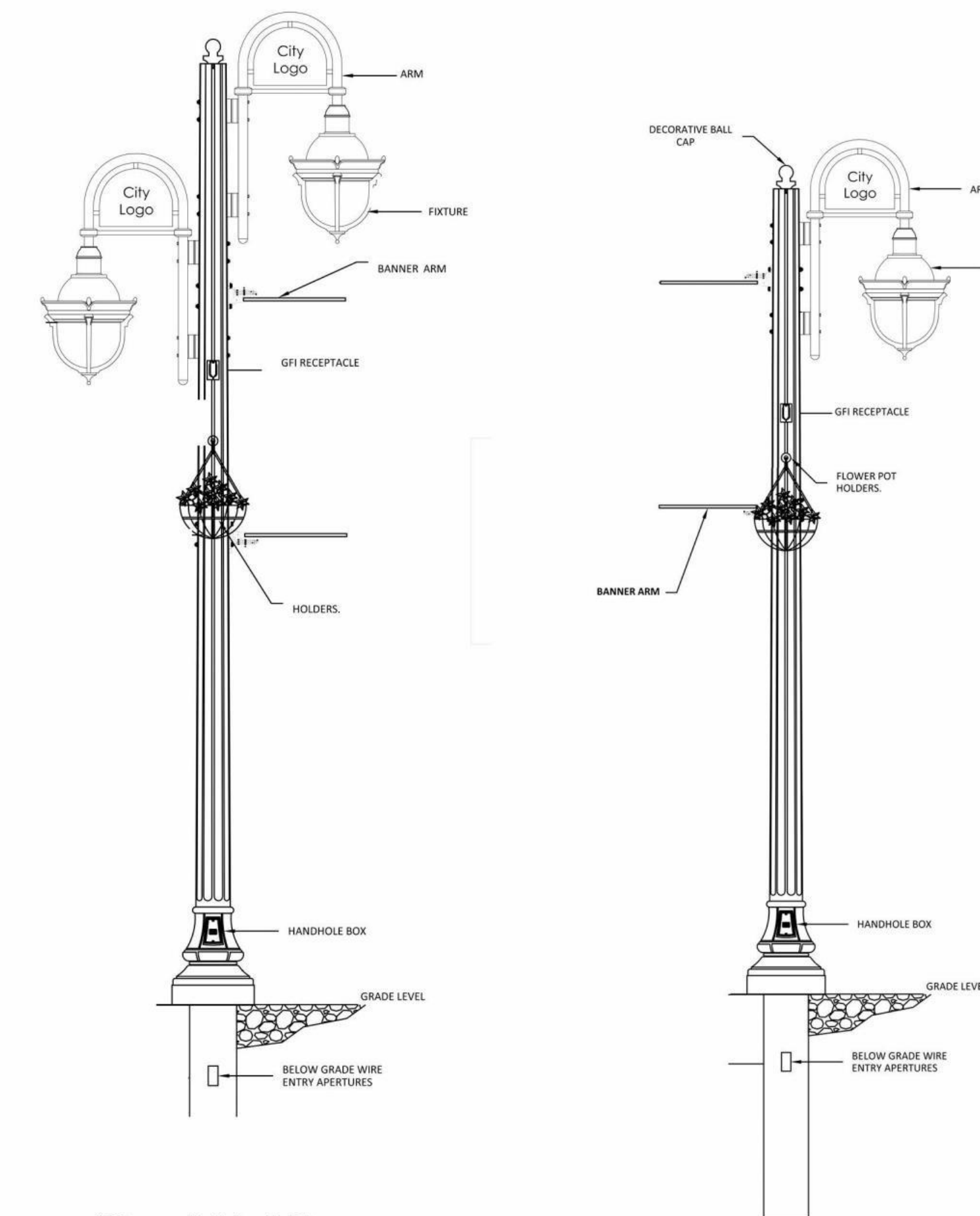
Street Trees and Planting

Native trees with perennial groundcover or decorative tree grate



Heritage Banner Poles Gateway Feature

- Cluster of 3 large poles to help frame the arrival into the downtown
- Poles large enough to carry large banners as permanent or seasonal features
- Could include lights to illuminate the banners.
- Could include permanent pedestrian level historical or culturally significant information panels



Street Lighting

- Double pendant style alternated with single pedestrian light with 'Old Town' character
- Themed banners and double hanging baskets
- Optional electrical outlets for seasonal adornments and audio



Bike Rack:
Tubular steel, painted black; optional community branding



Bollard:
Black steel, industrial overtones,

- Concrete sidewalk with accent paving;
- Durable black metal furnishings;
- 'New' gateway marker standard;
- District specific banner on new light standard;
- Street and sidewalk luminaire combination;
- 'District specific' tree species and annual displays.



Pavement: Lightly textured (granite like) unit pavers; red / brown sidewalk with contrasting tan/grey banding.



Seasonal Planter:
Removable, steel, black, cylinder or rectangular; optional community logo/ identifier.



Waste Bin:
Black, dual recycle bin with rain shield; to compliment bench and planter style.



Bench: Black steel bench - opportunity for community logo / identifier.

Furnishings

Possible Feature Opportunity:

Captive location for Community Kiosk (wayfinding map, community events, directory) or public art.

Street Lights:

Double pendant style alternate with single pedestrian luminaire; 'Old Town' character; themed banners and double hanging baskets; optional electrical outlets for seasonal adornments and audio.

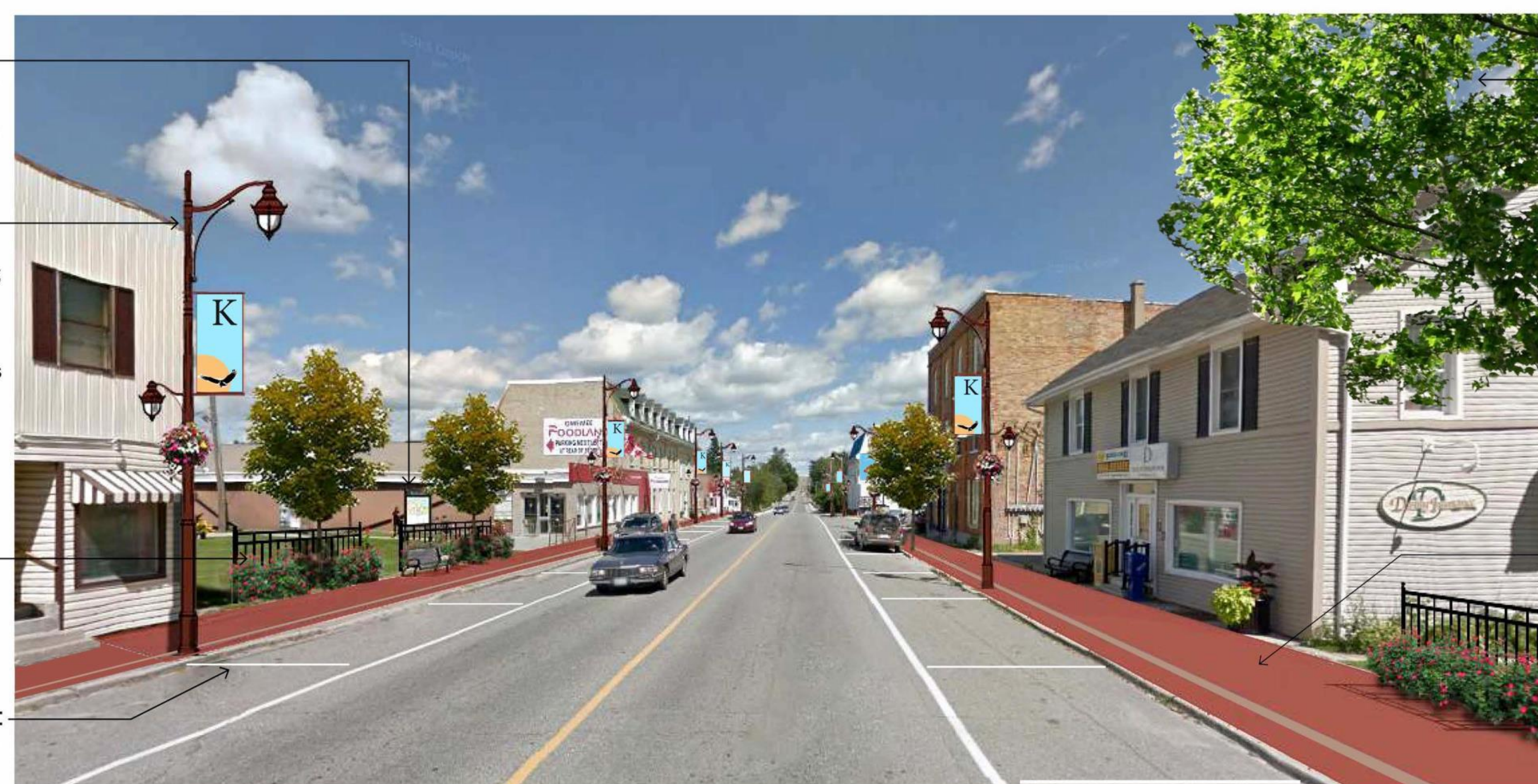
Continue Streetscape Edge:

Shade trees in planted bed with low 'Old Town' style fence panels maintain streetscape corridor while

Parking Stall Delineation:

Defined parking spaces reduce appearance of a wide road and aid in traffic calming.

Typical Streetscape Treatment



King Street - Typical Streetscape Treatment

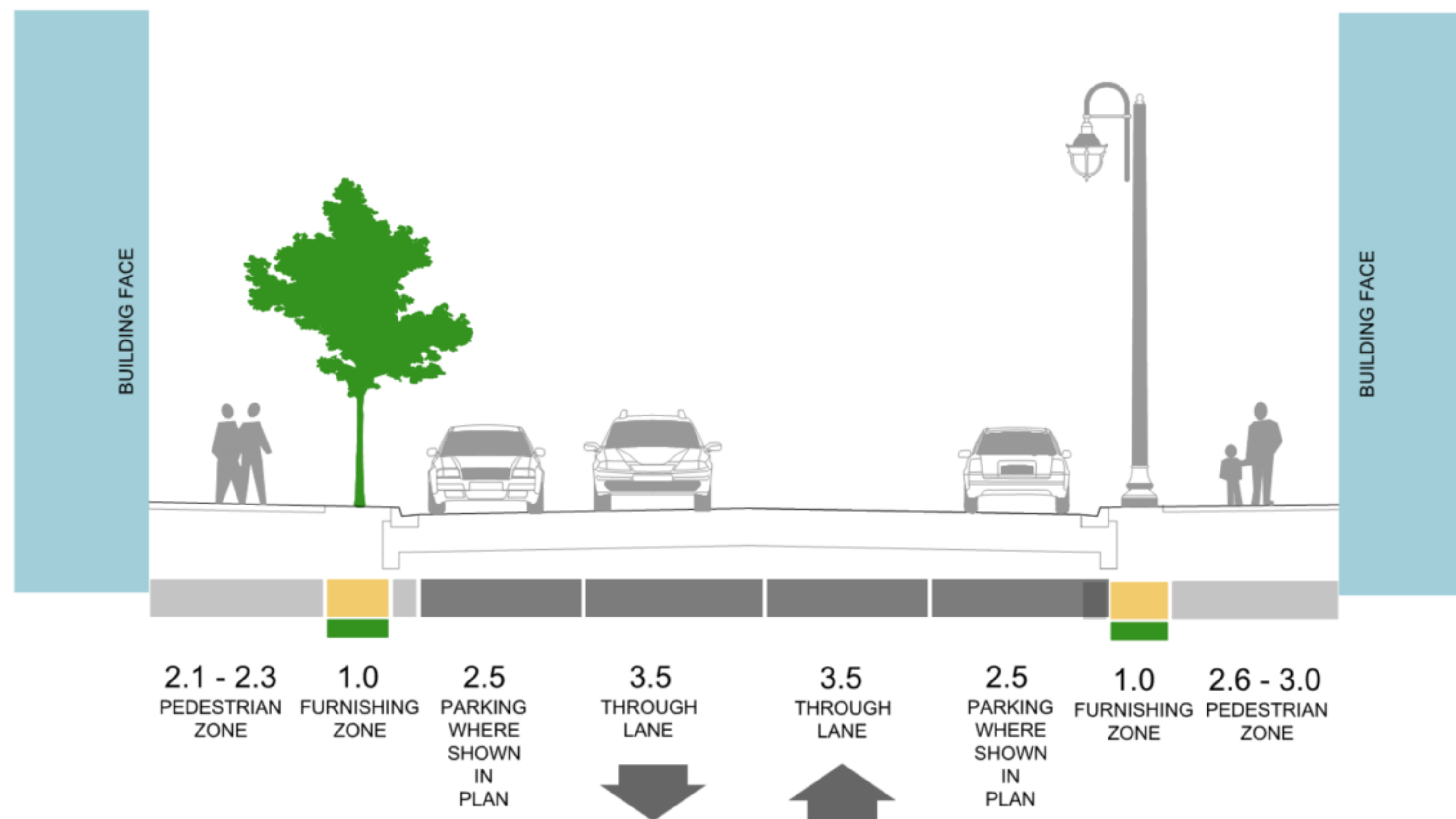
Street Trees:
Native tree species: Red Oak or Red Maple, in grade with perennial ground cover (daylilies, ornamental grasses) or optional decorative steel tree grate;

Pavement:
Sidewalk highlighted with unit paving. Complete building to curb treatment widens appearance of pedestrian zone.

* This view is an artist rendition only to demonstrate products, materials and finishes as proposed in the Streetscape Design Guidelines. Further detailing required for implementation.

ROAD RECONSTRUCTION & STREETScape

KING STREET – TYPICAL SECTION



Roadside Parking Spaces

In order to accommodate streetscape elements such as curb extensions, a total of approximately 8 parking spots would be removed as part of the design.

Design Phase

The detailed design for this project will continue during the fall and early winter of 2020.

Construction Timeline

The City of Kawartha Lakes was successful in obtaining design funding through the MTO Connecting Links program. The City will proceed with construction once construction funding is obtained through the MTO Connecting Links program.

Furnishing Zone – Area that is to contain street furniture, trees and other fixed objects, meant to provide a buffer between pedestrian and vehicular traffic.

Pedestrian Zone – Area to accommodate pedestrian movement through a clear, unobstructed path.

NEXT STEPS

Upon completion of the Public Information Centre, the following steps will be taken:

- Receive and review comments received from this Public Information Centre;
- Advance the design; and
- Schedule Public Information Centre #2 to be held in the near future.

Thank you for your participation in this public meeting.
Please provide comments by Wednesday October 14th, 2020.

Ms. Elizabeth Bonucchi, P. Eng.
Ainley Group
Project Manager

Phone: (343)-266-0002 ext. 207
E-mail: bonucchi@ainleygroup.com

Martin Sadowski, C.Tech
City of Kawartha Lakes
Engineering and Corporate Assets

Phone: (705) 324-9411 Ext. 2342
E-mail: msadowski@kawarthalakes.ca

Comments and information regarding the proposed project are being collected to assist the City of Kawartha Lakes in meeting the requirements of the Municipal Class Environmental Assessment. The collection of comments and information will be conducted in accordance with the **Freedom of Information and Protection of Privacy Act**. Comments will be maintained on file for use during the study and may be included in the study documentation. With the exception of personal information, all comments will become part of the public record.

