



Engineering  
for people



# Public Information Centre (PIC) Detailed Design of the Colborne Street Bridge

July 15<sup>th</sup>, 2025

Akram Khan, P.Eng. & Mike Chernis P.Eng.





# PIC Presentation Agenda

01 Land Acknowledgement

---

02 Project Location

---

03 Project Overview

---

04 PIC Objectives

---

05 Design Criteria

---

06 ESR Two Span Bridge Alternative

---

07 Proposed Single Span Arch Bridge Alternative

---

08 Single Span Arch Bridge Examples

---

09 Retaining Wall – William Place Retirement Residence

---

10 Bridge Approach Road & Access Road

---

11 Project Schedule- Key Milestones

---

12 Questions



# First Nations Land Acknowledgement

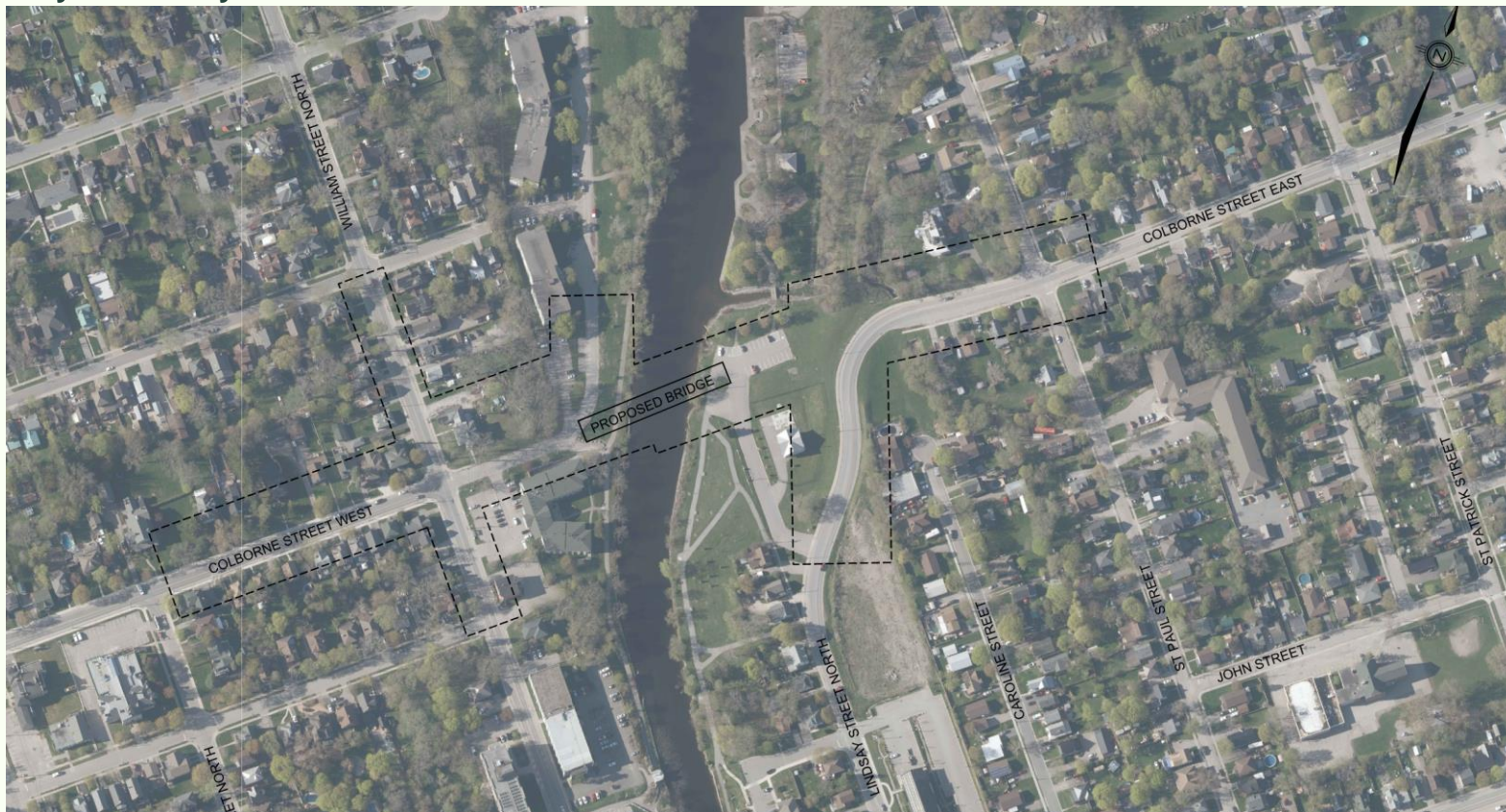
The City of Kawartha Lakes respectfully acknowledges that we are situated on Mississauga lands and the traditional territory covered by the Williams Treaties.

We are grateful for the opportunity to work here and we thank all the generations of people who have taken care of this land - for thousands of years. We recognize and deeply appreciate their historic connection to this place. We also recognize the contributions of Métis, Inuit, and other Indigenous peoples, both in shaping and strengthening this community and country as a whole. This recognition is connected to our collective commitment to make the promise and the challenge of Truth and Reconciliation real in our community.



# Project Location

**New Bridge Across Scugog River Connecting Colborne Street W. and Colborne Street East Located in the Community of Lindsay**



# Project Overview

- Scugog River forms a natural barrier in Lindsay for several east-west routes, including Colborne Street
- The need for additional capacity was first recognized in 1960 and later reconfirmed in the 1970's and 1980's
- 1994 Class Env. Assessment Study and subsequent EA Amendment in 2000 recommended a Scugog River bridge crossing at Colborne Street:
  - Satisfies forecasted traffic volumes across Scugog River
  - Provides a continuous link on the cross-town arterial road network
  - Promotes future growth within Lindsay through development opportunities within the current urban boundary
  - Maximizes the use of existing road network
  - Reduced impact to the natural environment
- Objective of this assignment is to assess the findings from previously developed preliminary designs to solidify a final design that captures the City's vision for a continuous arterial connection along Colborne Street

# A+ Public Information Centre Objectives

- This Public Information Centre is being held to present the detailed design of the proposed bridge and gather feedback from the General Public, Indigenous Communities, and other stakeholders
- Present current stage of the project and planned project schedule



# Design Criteria

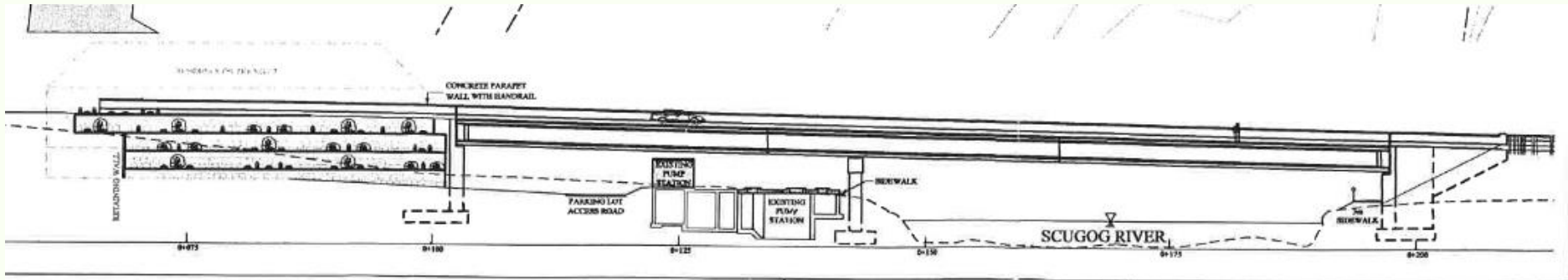
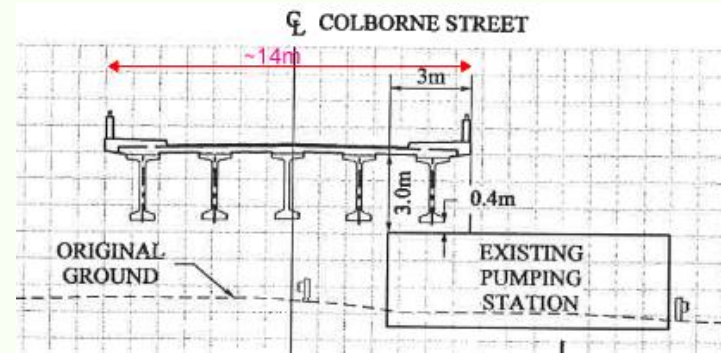
In accordance with previously completed studies and City of Kawartha Lakes Standards

- Two (2) lanes of traffic (east-west) on the bridge and approaches
- Sidewalks on either side of the bridge and approaches
- Minimum 4.5 metre vertical navigational clearance (matching clearance at Wellington St. Bridge)
- Required Hydraulic Opening to convey 100-year storm event
- Maintain access from William Street North to existing Colborne Street apartment complexes
- Maintain lower access to William Place Retirement Residence driveway

# A+ ESR Two Span Bridge Alternative

ESR Addendum (2000) recommended Two Span Uniform Depth Concrete Girder Bridge

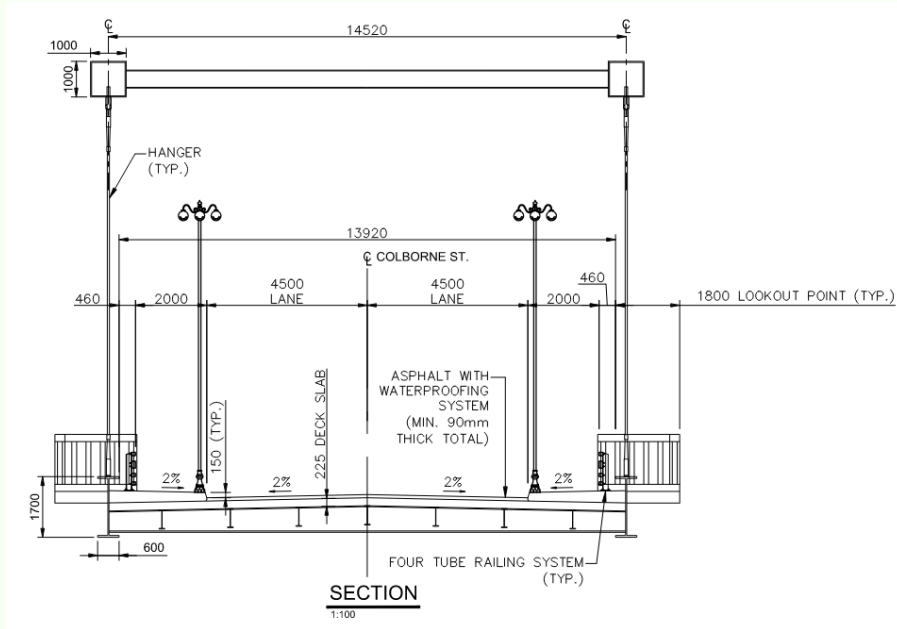
- Requires central pier
- Central pier increases temporary and permanent natural environments footprint
- Uniform depth concrete girder has minimal aesthetical appeal from above the bridge and from the trails under the bridge and is not sympathetic to the historic nature of the area



## Proposed Single Span Arch Bridge Alternative

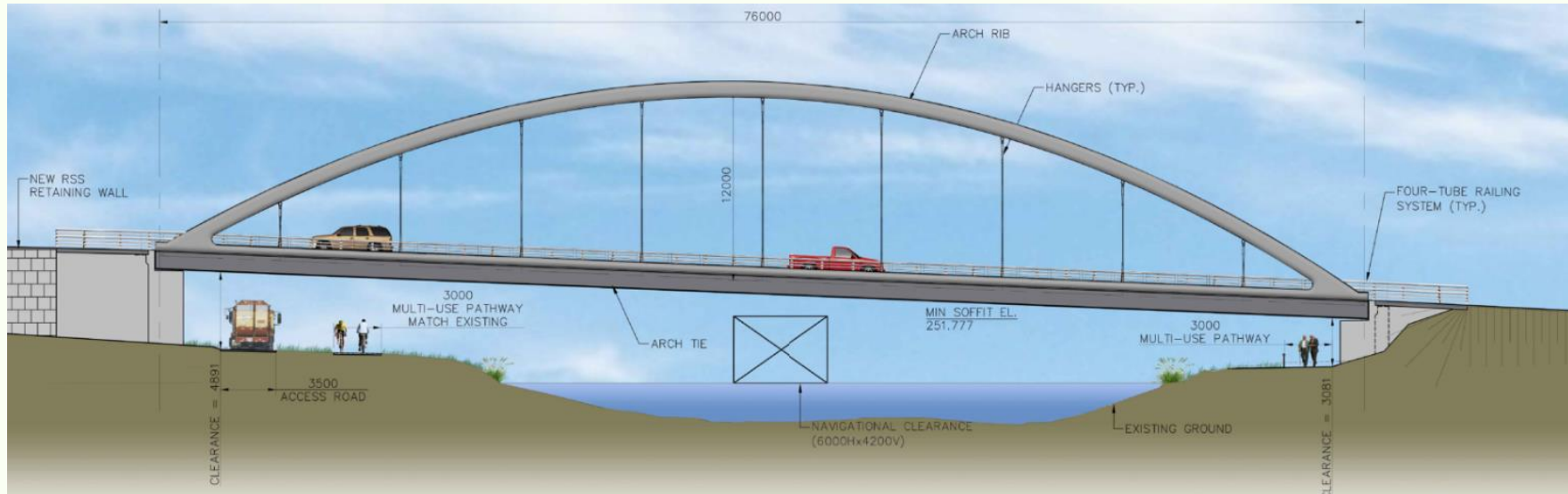
### Bridge deck Cross-Section for two span bridge includes

- Two (2) lanes of vehicular traffic and sidewalk on either side.
- Lighting and look out (at the middle of the Scugog River)



# A+ Single Span Bowstring Arch Bridge

- Located in Downtown Lindsay in a highly visible scenic area over Scugog River within the Trent-Severn National Historic sites and is frequented by a high volume of trail users, frequently used navigable waterway, and the specific location may be considered an iconic location for the City of Kawartha Lakes
- Highly aesthetic bridge sympathetic to cultural heritage of historic Trent-Severn Waterway
- Aesthetical appeal from various vantage points
- Single span eliminated the pier close to the riverbank thereby reducing permanent natural environment footprint (requires marine archaeological study & temporary scaffolding in the river during construction)



# A+ Single Span Arch Bridge Example

HWY 21- Bayfield Bridge – MTO West Region



# A+ Single Span Arch Bridge Example

HWY 21- Bayfield Bridge – MTO West Region



# A+ Single Span Arch Bridge Example

## Victoria Bridge - City of London



# A+ Single Span Arch Bridge Example

Illinois – USA - Illinois 104 over the Illinois River



# A+ Single Span Arch Bridge Example

Illinois – USA -Illinois 104 over the Illinois River



# A+ Single Span Arch Bridge Example

## Dammühlenweg Bridge- Germany



# A+ Single Span Arch Bridge Example

## Dammühlenweg Bridge- Germany



# A+ Southwest Retaining Wall William Place Retirement Residence





# Colborne Street Bridge Associated Road Network Improvements



Colborne Street & William Street N. Intersection



Colborne Street & Lindsay Street N. Intersection



Access Road to Colborne Street Apartments



- Traffic Signals
- Dedicated Turning Lanes
- Improved Pedestrian Crossings
- Updated Street Lighting

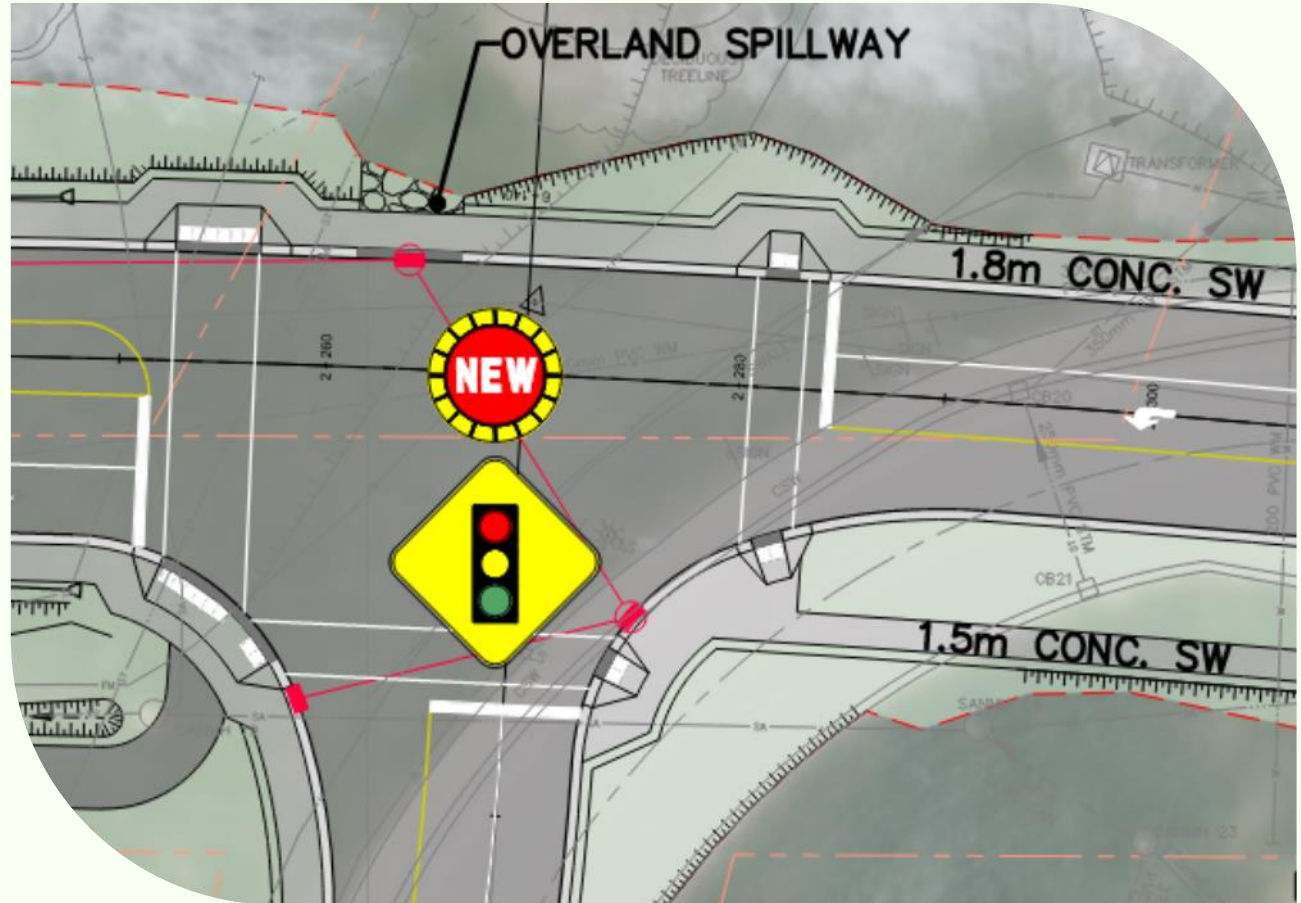




## Colborne Street & Lindsay Street N. Intersection

### Proposed Works:

- Traffic Signals
- Dedicated Turning Lanes
- Improved Pedestrian Crossings
- Updated Street Lighting
- Connection to Existing Multi-Use Pathway System

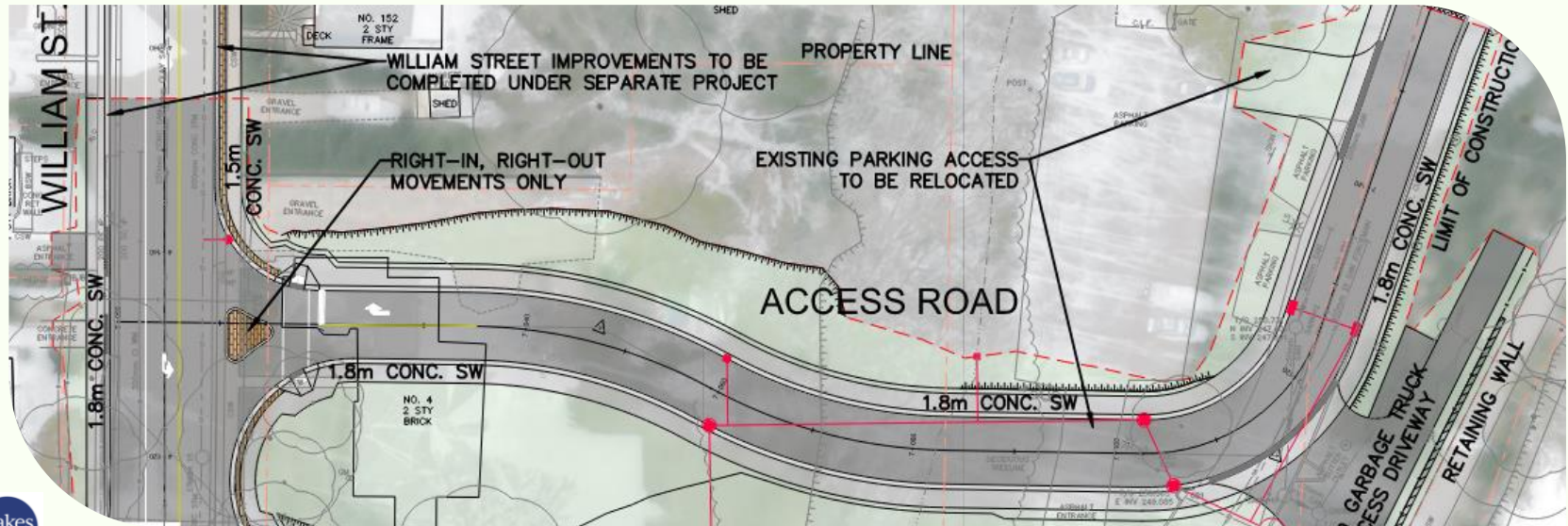




## Access Road to Colborne Street Apartments

### Proposed Works:

- Right-in/Right-out Access to William Street N.
- Improved Pedestrian Crossings & Facilities
- Updated Street Lighting
- Relocated Access to Existing Parking Lot
- Lower Access to William Place Retirement Residence Maintained



# Anticipated Construction Sequencing

- Relocate underground and overhead utilities
- Relocate buried infrastructure
- Earthworks to facilitate profile changes
- Construct roadway, intersection improvements, and southwest retaining wall
- Construct bridge abutments
- Install temporary support system for the arch bridge (temporary scaffolding in the river for bridge erection)
- Erect arch bridge steel elements
- Construct concrete deck, lookout and traffic railing system
- Waterproof the bridge deck and asphalt pavement
- Install traffic lights and street lighting
- Landscaping – seeding/sodding, tree planting, etc.

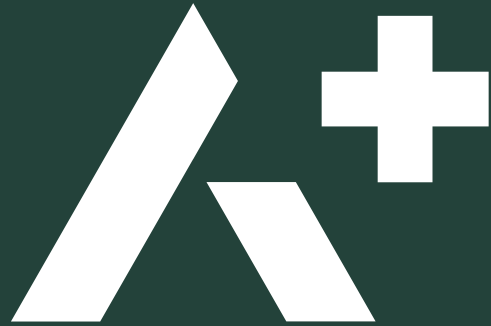


# TENTATIVE PROJECT TIMELINE





# Questions?



Thank you