

Public Information Centre

New Highway 7 Sewage Pumping Station

May 22, 2024

Location:

Victoria Room – City Hall

Time:

5:00 pm – 7:00 pm



Background Information

The City of Kawartha Lakes (City) is initiating a planning process to expand the wastewater collection system for the community of Lindsay. The community of Lindsay is rapidly expanding with new developments and requires upgrades to the wastewater collection system to support the increasing needs of the residents of the community.

One of the new developments is the Gateway Subdivision located on Highway 7 and Lindsay St. South. Upgrades to the wastewater collection system will be required to support the new homes to be built in the subdivision.

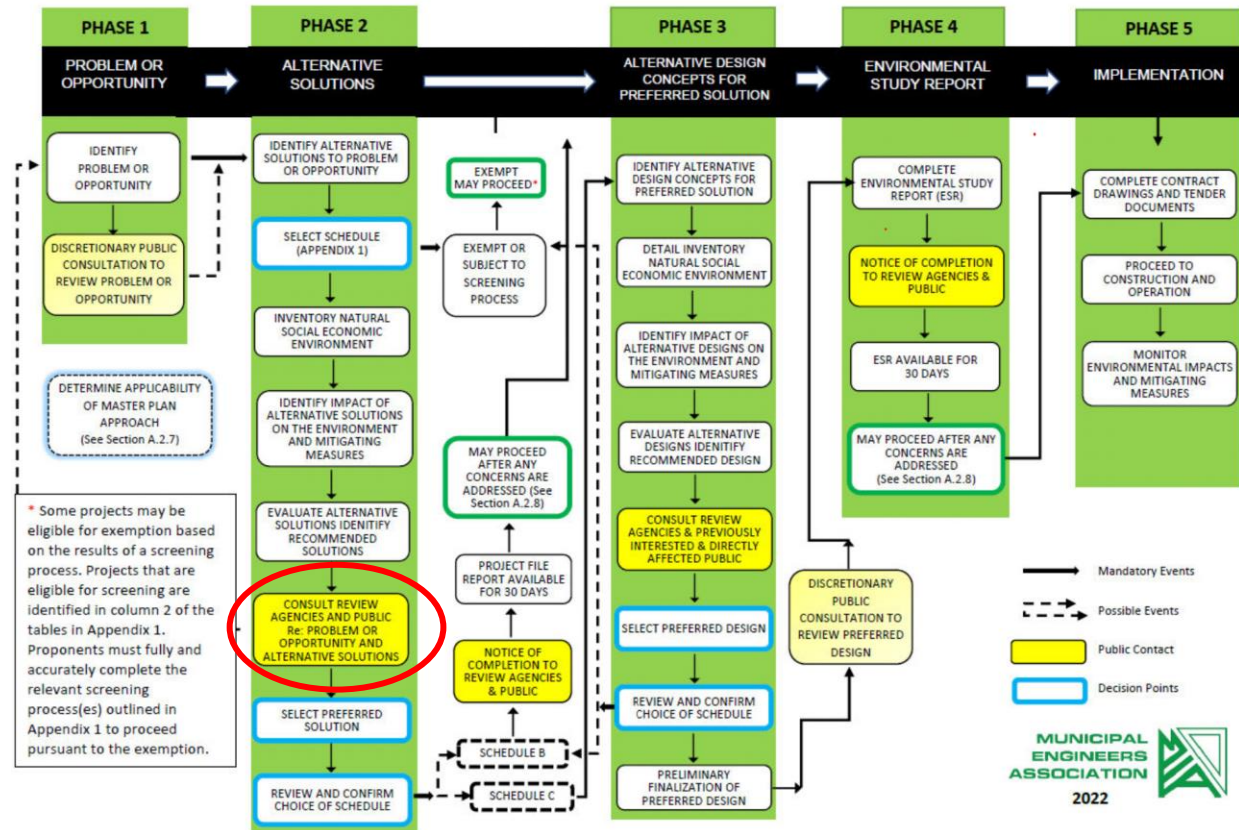
These upgrades and recommendations will be carried out as a Schedule 'B' project under the terms of the Municipal Class Environmental Assessment (Class EA) process, which is approved under the Environmental Assessment Act.

Municipal Class EA Process

- Meets the requirements of Ontario's Environmental Assessment Act by ensuring that potential environmental impacts of projects are considered.
- Consultation with the public and interested stakeholders including government review agencies and First Nations is required to identify environmental impacts of alternative solutions, develop mitigating measures and identify a preferred solution.

EXHIBIT A.2. MUNICIPAL CLASS EA PLANNING AND DESIGN PROCESS

NOTE: This flow chart is to be read in conjunction with Part A of the MCEA



Opportunity Statement

New and future developments within the community of Lindsay including the Gateway Subdivision, require upgrades to the capacity of the existing wastewater collection system.

Alternatives

Do Nothing

This alternative would have the lowest capital cost and would involve continuing to use the existing wastewater collection system without any changes. This alternative is not feasible as the current system will not be able to support future developments.

Gravity Sewer System for New Development

This option involves servicing all new properties with gravity sewers. This is not a viable option because all properties will not meet the required elevations for gravity sewers to connect to the existing wastewater collection system.

New Sewage Pumping Station

This alternative involves constructing a new sewage pumping station facility within the new Gateway Subdivision development site. A new wet well system of sufficient storage volume with submersible pumps to meet the flow requirements for the wastewater collection system is considered a viable option.

Alternatives Evaluation Matrix

City of Kawartha Lakes Highway 7 Pumping Station							
Project No. 2337786							
Evaluation of Alternative Solutions							
Description/Elements		Alt. 1		Alt. 2		Alt. 3	
		Do Nothing		Gravity Sewer System for New Development		New Sewage Pumping Station	
	Weighing Factor	Score	Weighted Score	Score	Weighted Score	Score	Weighted Score
Meet Flow Capacity Requirements	0.25	0	0	0	0	5	1.25
Site/Neighbourhood/Impact/Noise/Odour/Aesthetics	0.05	5	0.25	5	0.25	4	0.2
Property Acquisition/Availability	0.05	5	0.25	5	0.25	5	0.25
Expansion Potential	0.2	0	0	1	0.2	5	1
Ease of Integration/Constructability	0.05	5	0.25	2	0.1	4	0.2
Terrestrial Habitat/Wildlife	0.05	5	0.25	5	0.25	5	0.25
Archaeological Resources	0.05	5	0.25	5	0.25	5	0.25
Operability	0.1	0	0	0	0	5	0.5
Capital/Operating Costs	0.2	5	1	4	0.8	3	0.6
Total Weighted Score	1		2.25		2.1		4.5

*Scoring: 5 is the highest (best). The highest scoring alternative reflects the preferred solution

Preferred Alternative

- The preferred alternative is a new sewage pumping station located within the Gateway Subdivision.
- The new station is expected to be a wet well system with submersible pumps rated to provide 35 L/s of flow each, in a duty-standby configuration. The station will be equipped with emergency power systems with an outdoor generator to allow operations to continue if utility power is lost.
- The station is proposed to be in the designated Block 45 of the new Gateway Subdivision. The station property will be enclosed with a fence.
- The new forcemain will extend from the proposed station and travel north to connect to maintenance hole MH 331A. Sewage will be pumped from the new station to MH 331A, then travel by gravity sewer north to Logie St. SPS.
- The high-level cost estimate for construction of the station and forcemain, is \$2,975,000 excluding HST. Potential construction will be funded through development charges.

New Highway 7 SPS

Servicing Areas

Legend

- Additional Properties Served by Pumping Station
- Gateway Subdivision Served by Gravity Sewer
- Gateway Subdivision Served by Pumping Station
- Approximate Location of Proposed New SPS

Estimated wastewater flows from Gateway Subdivision	30.78 L/s
Estimated wastewater flows from additional serviced properties	3.5 L/s
Total wastewater flows	34.28 L/s
Pumping Station Design Flow	35 L/s

Gateway Subdivision
Served by Gravity
Sewer

Additional Properties
Served by Pumping
Station

Gateway Subdivision
Served by Pumping Station

Approximate Location of Proposed New SPS

Lindsay Street S

Lindsay Street S

Highway 7

Highway 7

Cohen Mile Rd

Google Earth

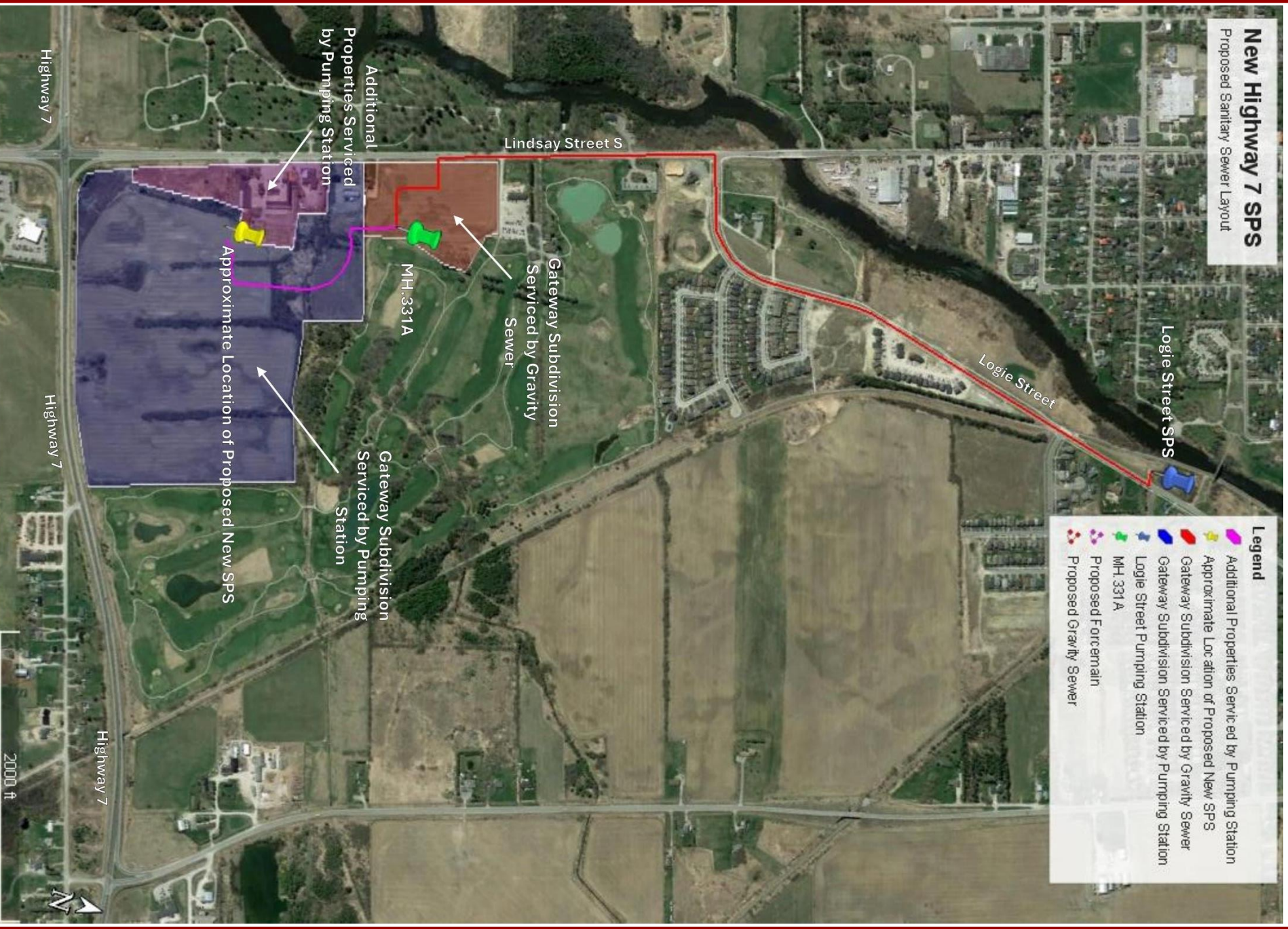
1000 ft

N

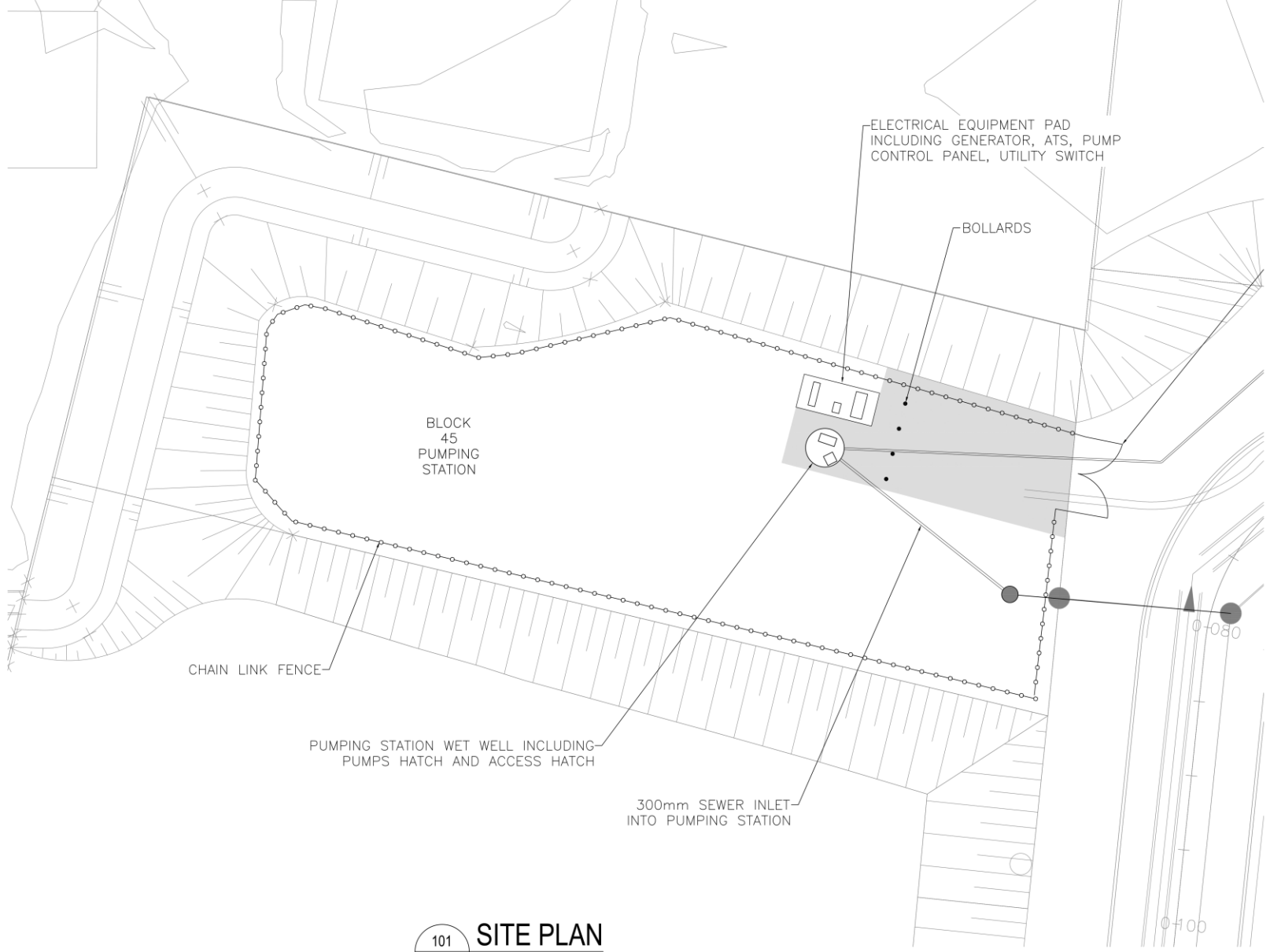
New Highway 7 SPS

Proposed Sanitary Sewer Layout

- Legend**
- Additional Properties Served by Pumping Station
 - Approximate Location of Proposed New SPS
 - Gateway Subdivision Served by Gravity Sewer
 - Gateway Subdivision Served by Pumping Station
 - Logie Street Pumping Station
 - MH 331 A
 - Proposed Forcemain
 - Proposed Gravity Sewer




BORDER SIZE: ISO A1 (841mm x 594mm) DATE PLOTTED: 2024 / 04 / 30 @ 04:30 PM PLOT SCALE: 1:1 FILE PATH: c:\bldg\proj\2024\1317786 - CKL Hwy 7 Pumping Station\dwg\1317786 CKL HWY 7 Pumping Station - Site Plan.dwg CAD PLOTTER: TSC Funtel



101
S1A

SITE PLAN
SCALE: 1:250



GREER GALLOWAY
CONSULTING ENGINEERS
PETERBOROUGH
BELLEVILLE
KINGSTON
1620 WALLBRIDGE LOYALIST ROAD
BELLEVILLE, ONTARIO, K8N 4Z5
PHONE: 613-966-3068
FAX: 613-966-3087


NOTES:

1. ALL WORK SHALL BE IN ACCORDANCE WITH RELEVANT CODES AND GUIDELINES.
2. ALL DRAWINGS AND ADDENDA ARE TO BE READ AS, AND IN CONJUNCTION WITH THE SPECIFICATIONS.
3. ALL EQUIPMENT SHALL BE INSTALLED AS SPECIFIED OR APPROVED EQUIVALENT.
4. CONTRACTOR MUST CHECK AND VERIFY ALL DIMENSIONS BEFORE PROCEEDING WITH WORK AND BE RESPONSIBLE FOR SAME.
5. CONTRACTOR MUST REPORT ANY DISCREPANCIES TO ENGINEER FOR RESOLUTION BEFORE COMMENCING THE WORK.
6. ANY CHANGES MUST BE APPROVED BY THE ENGINEER.

A

B

A DETAIL NO.
B DRAWING NO. - WHERE DETAILED

01	ISSUED FOR REVIEW	24/03/21
REVISION	DESCRIPTION	DATE
<div><div><div>NORTH</div></div><div>STAMP</div></div>		
PROJECT CKL HWY 7 PUMPING STATION LINDSAY, ONTARIO		
DRAWING TITLE SITE PLAN		
DESIGNED BY J. SINNAKANDU		
DRAWN BY T. FUNARI/C. CLARK		
REVIEWED BY T. GUERRERA		
APPROVED BY T. GUERRERA		
PROJECT DATE 2024/03/01 (YYYY/MM/DD)		
PROJECT # 23-3-7786		
DRAWING # SP1A		DRAWING SCALE (ISO A1) HOR: AS SHOWN VER: AS SHOWN

Next Steps

- Review choice of preferred solution
- Identify alternative design concepts for preferred solution
- Finalize preferred design and proceed towards Project File Report
- Complete Contract Drawings and Tender Documents

Project Contact Information

Marten Leclerc
Senior Engineering Tech
City of Kawartha Lakes
26 Francis Street
Lindsay, ON, K9V 5R8
T: (705) 324 9411 x 1131
Email: mleclerc@kawarthalakes.ca

Tony Guerrero, P. Eng
The Greer Galloway Group Inc.
1620 Wallbridge Loyalist Road
Belleville, ON K8N 4Z5
T: (613) 966-3068
F: (613) 966-3087
Email: tguerrera@greergalloway.com

Slides will be made available on the City of Kawartha Lakes website following the presentation.

Thank you